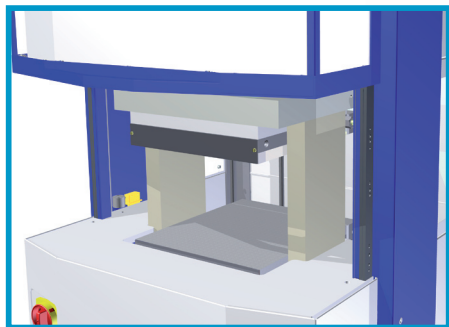


# Laboratory Platen Presses

LabEcon series: for the best price/quality performance



## Features New LabEcon Design:

- Compact and simple to operate
- Reliable construction
- High safety level
- Ergonomic
- Service friendly
- Small footprint through pillar design

The Fontijne laboratory Platen Presses are being used in the polymer processing, rubber, and composites industry. The presses are utilized as sample preparation equipment for: Quality control, Research and Materials development

The LabEcon series 150/300/600 are presses specially designed for basic pressing operations. For straightforward automated pressing operations, these presses offer a high quality as well as an economical solution. Fontijne Grotnes presses have a perfect fit for laboratory- and research centers, because of its small footprint and configurable design.

### Design Elements:

**Press frame:** an ergonomic mode of operation because of the 2 columns press frame. The lower platen is connected to the hydraulic cylinder and an upper platen is mounted on the press frame.

**Press Platens:** equipped with electrical cartridge heating elements and cooling channels, which make it possible to heat-up and cool-down the product. The newly designed platens guarantee an accurate temperature distribution over the platen surface.

**Hydraulic unit:** The dual integrated pumps ensure fast closing and accurate pressing and adjust the pressure automatically to maintain a stable press force on the sample product.

**FONTIJNE  
PRESSES**  
Manufactured by Fontijne Grotnes

# Laboratory Platen Presses

## LabEcon series: for the best price/quality performance

### Control Systems

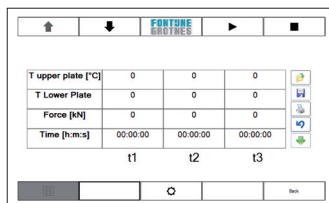
Three new control systems are developed in-house for the LabEcon series. The features include digital press force and temperature controllers.

The standard manual control has a basic user interface, this can be extended by a programmable and PC control system.

### Technical data

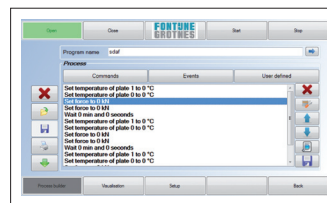
LabEcon		150	300	600
Closing Force (max.)	kN	150	300	600
Platen size	mm	320 x 320	320 x 320	400 x 400
Cylinder stroke	mm	150	200	200
Specific platen pressure	N/cm <sup>2</sup>	146	293	375
Capacity per plate	kW	3.2	3.2	5.0
Max. temperature	°C	300	300	300
Closing speed	mm/sec	27	27	14
Weight nett/Gross	kg	420/450	420/450	600/630
Length	mm	810	810	810
Width	mm	780	780	780
Height	mm	1880	1880	1880

### Manual Control



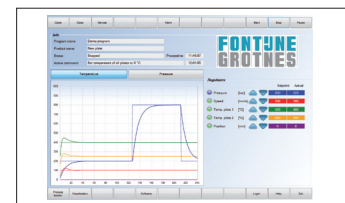
- Temperature & pressure control
- 7" touch panel
- Storable table program with 3 phases on time base

### Programmable Control



- Temperature & pressure control
- 7" touch panel
- Storable recipe builder on time base
- Simple Process Pre View
- Read-out of Data Acquisition
- Meets ASTM/DIN/ISO Standards

### Lab Pro View



- Temperature & pressure control
- 15" touch panel
- (Based on LAB2000)
- Storable recipe builder with commands and events
- User defined subroutines
- Process Pre View
- Data Acquisition of selectable parameters with export to Excel
- Meets ASTM/DIN/ISO Standards



**Fontijne Grotnes BV**  
Vlaardingen, Netherlands  
Phone: +31 (0)10-434 82 33

**Fontijne Grotnes Inc.**  
Itasca, Illinois, USA  
Phone: +1 630 875 1111

[info@fontijnegrotnes.com](mailto:info@fontijnegrotnes.com)

[www.fontijnegrotnes.com](http://www.fontijnegrotnes.com)

Represented by: